

Excellence in seaming

2063

Modern single-needle high-speed seamer with drop feed and direct drive



2063









For universal use:

High-speed industrial sewing machine (stitch type 301) for closing- and assembly seams in a wide range of applications. This machine can be used for all straight stitching operations on light to medium-heavy materials and impresses with its excellent price-/performance ratio.

The PFAFF 2063 is equipped as standard with bottom feed and automatic functions such as sewing foot lift, back-tacking device and thread trimmer. In one version, a short thread trimmer (-900/82) is used, which enables a thread length of max. 3 mm.

The control panel is integrated into the machine arm - it allows quick, intuitive settings for individual sewing. The minimal lubrication of the hook and needle bar prevents a contamination of the sewing material and ensures a long service life for this PFAFF product.

Versions:

| Type | Product no. | Version |  max. Speed |  max. mm |  |  |  -900/24 |  -900/82 |  -909/14 |  -910/06 |  -911/37 |
|---------------|--------------------|---------|--|---|---|---|--|---|---|---|---|
| 2063 | OM902-2063-001/001 | B | 5.000 | 5,0 | | | | | | | |
| | OM902-2063-002/001 | B | 5.000 | 5,0 | | | | | | | |
| 2063-G | OM902-2063-002/002 | C | 4.000 | 7,0 | | | | | | | |

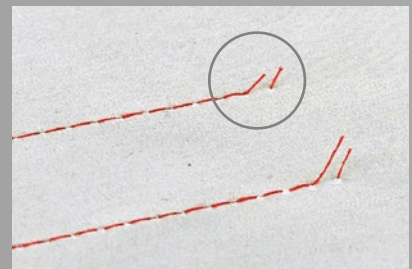
Easy and intuitive to use display, integrated in the machine head



285 mm clearance under the machine arm



Short thread trimmer, 3 mm max. (depending on subclass)



Features:

- Good stitch length continuity and seam quality
- Robust and durable machine concept
- Automatic sewing foot lift and backtacking
- Reliable thread trimmer, depending on version:
 - 900/24: with approx. 5 mm remaining thread length
 - 900/82: short thread trimmer ≤ 3 mm remaining thread length
- Quiet machine running thanks to the minimal oil lubrication of the needle bar as well as the „semi-dry“ lubrication concept
- Accurate seam beginning due to the thread nipper (standard)
- Integrated, dimmable LED sewing light (standard)
- Integrated control panel for programming and calling up of seam programs
- Direct access buttons for: „needle up/down“, „1-stitch function“ and „manual backtacking“
- Function button „Reset“
- High efficiency thanks to the energy-saving, integrated direct drive
- USB slot (can be used for charging)
- Easy to maintain
- Machines with „G“ (= large hook) have 50% more thread capacity
- Convincing price-/performance ratio



Dimmable LED light, integrated in machine head (standard on all versions)



Wide range of applications: Sewing and handicraft businesses, tailoring, studios



Horizontal hook ($\varnothing 21$ mm) for B version
Horizontal hook ($\varnothing 25,5$ mm) for C version



Specifications:

Stitch type:

301 (lockstitch)

Clearance when lifting:

max. 12 mm (by kneeswitch), max. 9 mm (electromagnetically)

Needle bar stroke:

B version: 31 mm

C version: 35 mm

Needle system:

134 (DBx5)

Needle size:

B version: 70 - 90 mm

C version: 90 - 110 mm

Thread size:

B version: max. 50/3

C version: max. 30/3

Connection voltage:

single-phase a.c.,

230 V, 50/60 Hz

Power input

0,55 KW

Weight/sewing head:

36 kg

Packaging weight:

43 kg

Packaging size (LxBxH):

713 x 250 x 558 mm

**PFAFF Industriesysteme
und Maschinen GmbH**

Hans-Geiger-Str. 12 – IG Nord
D-67661 Kaiserslautern

Telefon: +49-6301/3205-0

Telefax: +49-6301/3205-3171

E-mail: info@pfaff-industrial.com