

# KE-430HX/HS

Electronic Direct Drive Lockstitch Bar Tacker (Short Remaining Thread Spec.)

# BE-438HX/HS

Electronic Direct Drive Lockstitch Button Sewer (Short Remaining Thread Spec.)

With the world's top-class sewing speed and prevention of thread breakage with a Needle Cooler, the machine has increased productivity.

It also has superior sewing quality, usability, and reduces maintenance cost.

- Productivity Improvement by World's Fastest Sewing Speed and IoT
- Beautiful and Highly-reproducible Sewing Quality
- Superior Usability as Everyone can Use Easily and Reliably



# NEXIO

# World's Fastest Sewing<sup>\*1</sup>

With the world's top-class sewing speed and prevention of thread breakage with a Needle Cooler, the machine has increased productivity. It also has superior sewing quality, usability, and reduces maintenance cost.

\*1 Electronic Direct Drive Lockstitch Bar Tacker, According to Brother survey, 08.2017

## Productivity Improvement by World's Fastest Sewing<sup>\*2</sup> and IoT

### 1 Overwhelmingly superior productivity with sewing speed 3,300sti/min

KE-430H provides 3,300sti/min (BE-438H: 2,800sti/min) and contributes to enhance productivity.

### 2 Needle Cooler prevents thread breakage

Needle Cooler<sup>\*3</sup> prevents thread breakage, it enhances actual sewing speed by 10% compared with current model, F series. It provides high productivity and quality.

### 3 Productivity improvement with IoT

NEXIO series are IoT applicable models. The visualization by connecting sewing machine and computer technology enables the customer to analyze, manage processes, speed up productivity improvement and maintenance work.

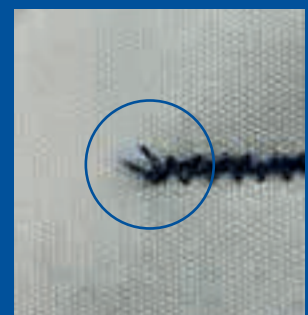
### 4 Reduction of disposition of thread ends (short remaining thread)

Thread trimmer driven by stepping motor cuts the thread shorter, stable and quietly than conventional mechanical thread trimmer. It reduces hand trimming work after sewing.

Also, the thread nipper, equipped as standard<sup>\*4</sup>, minimizes thread cast off at sewing start and bird's nest.



Conventional Model



KE-430H

\*2 Electronic Direct Drive Lockstitch Bar Tacker, According to Brother survey, 08.2017

\*3 KE-430HX \*4 KE-430HX-1, -3, -K spec.

## Beautiful and Highly-reproducible Sewing Quality

### 5 Thread tension can be set as numerical value by digital tension

You can adjust the tension appropriately for the material being sewn without relying on individual feel. It provides higher production management and sewing reproducibility.

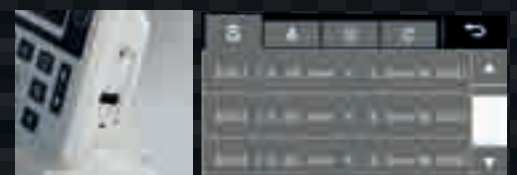
### 6 Clean sewing without Oil staining

HX models are semi-dry type and they supply constant clean oil only to the shuttle hook, there is no concern of oil staining. HS models are minimum lubrication and they supply limited oil only to the needle bar and thread take-up to prevent oil from being dispersed, realizing clean sewing for your valued product.

## Superior Usability as Everyone can Use Easily and Reliably

### 7 User-intuitive Color LCD with touch panel

Equipped the Color LCD with touch panel that indicates display items with illustration icons, offering use-intuitive operation. It is very easy to set the cycle program, along with sewing patterns, sewing speed, and magnification. The upper thread tension can be stored easily as user programs.



### USB port is equipped

Data transfer to other sewing machines and software upgrade can be done easily with USB memory.



**8** Reduction of maintenance cost as there is no need for grease-up work.

There is no need for grease-up work at the connecting rod because it adopts oil lubricating, and reduces maintenance work.

**9** Low noise and low vibration for stress-free operation

The noise and vibration are minimized by reducing impact during thread trimming. Operators can sew conformably without fatigue and stress.

**10** Set button smoothly

BE-438H's renewed button clamp enables to set a button more smoothly.

**11** Wide variety of sewing capability due to enlarged sewing area (50x40mm)

Sewing area can be expanded from 40x30mm to 50x40mm as option. It enables to sew more applications such as hook and loop fastener and applique.



Specifications/

**KE-430HX-0**

**KE-430HS-0**

Application	
1	Light materials
3	Medium materials
5	Heavy materials
K	Knitted materials
3	Medium materials
5	Heavy materials



**BE-438HX**

**BE-438HS**



Model	KE-430HX				KE-430HS		BE-438HX	BE-438HS
	-01	-03	-05	-0K	-03	-05		
Application	Light materials	Medium materials	Heavy materials	Knitted materials	Medium materials	Heavy materials	Button attaching	
Lubrication	Semi-dry				Minimum lubrication		Semi-dry	Minimum lubrication
Max. sewing speed	3,300sti/min						2,800sti/min	
Sewing area	Max.40×30mm <sup>*1</sup>						Max.6.4x6.4mm	
Dimensions of buttons that can be Sewn	-						Outer diameter of buttons 8-30mm <sup>*2</sup>	
Stitch length	0.05~12.7mm						0.05~.4mm	
Feed mechanism	Y-θ intermittent feed mechanism (pulse-motor driven mechanism)							
No. of stitches	Variable Refer to "Program List" for details on the number of stitches for sewing patterns that are already preset.							
Max. No. of stitches	5,000 stitches/pattern							
Work clamp lifter	Pulse motor drive system							
Work clamp height / Button clamp height	Max. 17mm						Max. 13mm	
Rotary hook	Shuttle hook double shuttle hook, optional							
Digital tension	Standard equipment				-		Standard equipment	-
Thread wiper	Standard equipment						-	
Thead trimmer	Standard equipment						-	
Thread nipper	-01,-03,-0K:Standard equipment -05:Option				Option			
Data storage method	Internal flash memory (Data addition is available with external memory)							
No. of cycle programs	30 cycle (50 programs for each cycle)							
No. of stored data	89 sewing patterns are set already						64 sewing pattern are set already	
	(Up to 500 patterns can be added. Total number of stitches of stored data which can be added is within 500,000. <sup>*3</sup> )							
Motor	AC servo motor 550W (Direct Drive)							
Weight	Machine head: Approx. 58kg, Operation panel: Approx. 0.5kg, Control box: Approx. 7kg							
Power supply	Single-phase 100V/220V, 3-phase 220V/380V/400V 400VA (For single-phase 100V and 3-phase 380V/400V, the trans box is required.)							

\*1 Use the optional 50X40 SEWING AREA SET (SB7777001) for wide area of 50x40 mm

\*2 Use the optional button clamp (SA9303201) for diameters of 20 mm or greater.

\*3 The number of sewing patterns and number of stitches that can be recorded will vary depending on the number of stitches in each sewing pattern.



**RoHS Compliant**

KE-430HX/HS, BE-438HX/HS is compliant with the RoHS Directive(the restriction of the use of certain hazardous substances in electrical and electronic equipment) which came into effect in the EU in July 2006.



Brother has established voluntary environmental standards for products and created the "Brother Green Label". KE-430HX/HS, BE-438HX/HS is certified as an environment-conscious sewing machine according to the "Brother Green Label" standard.



Working with you for a better environment  
www.brotherearth.com

Please read instruction manual before using the machine for safety operation.  
-Product specifications are subject to change for improvement without notice.  
-Photographs are for illustration purpose. They may not represent actual operating conditions and may display optional parts.

**CHINA  
ASIA**

**BROTHER MACHINERY SHANGHAI LTD.  
BROTHER MACHINERY (ASIA) LTD.**

www.brother.cn/  
www.brother.com.hk/

+86-21-3135-3355  
+852-2777-0010

**EUROPE AFRICA, MIDDLE EAST  
AMERICAS**

**BROTHER INTERNATIONALE INDUSTRIEMASCHINEN GmbH  
BROTHER INTERNATIONAL CORPORATION**

www.brother-industrial.com  
www.brother-usa.com/

+49-2822-6090  
+1-908-704-1700

**brother**

**BROTHER INDUSTRIES, LTD.**

1-5, Kitajizoyama, Noda-cho, Kariya-shi, Aichi 448-0803, Japan.  
Phone: 81-566-95-0088 Fax: 81-566-25-3721 http://www.brother.com/

2017.7 17081153Z Vol.1